



AN 368 Whole Wafer Analysis Using TOF-SIMS

May 7, 2007 (Version 3.0)

Discussion

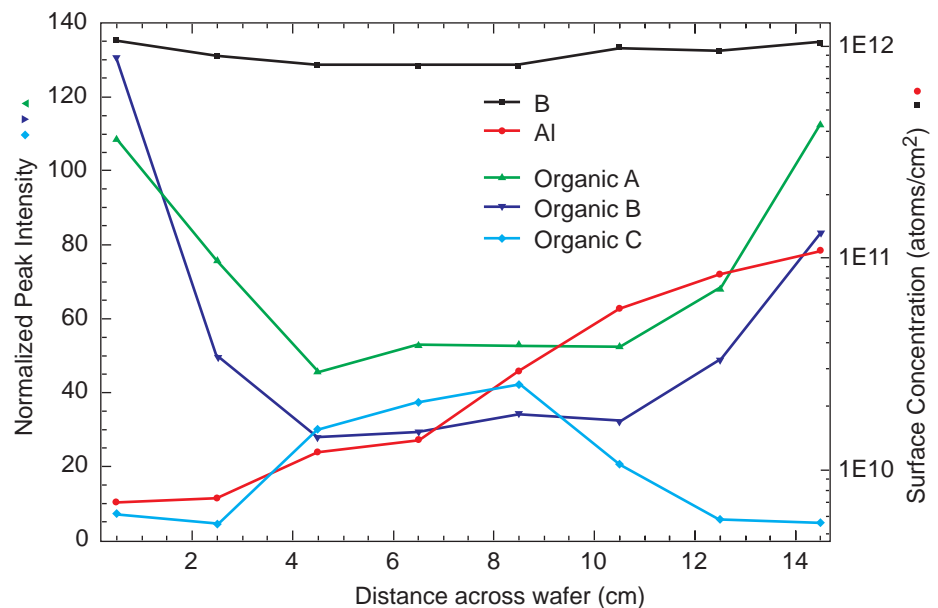
There is a growing interest in the impact of molecular contamination on semiconductor device yields. As line widths shrink, the control of these contaminants becomes more critical. In order to control contaminants, it is important to determine their chemical composition so that they can be traced to a source.

Time-of-flight Secondary Ion Mass Spectrometry (TOF-SIMS) can be used to detect and identify a wide range of organic and inorganic contaminants on wafers and other materials. It can also be used to determine the distribution of contaminants on whole wafers (200 mm diameter or smaller).

The data below show the distribution of several contaminants from the flat to the opposite edge of a six inch wafer. The organic components A and B have higher intensities at the edges of the wafer, while compound C is more abundant near the center (left-hand axis). These contaminants are often plasticizers, anti-oxidants, amines, surfactants and silicones that deposit on wafers.

TOF-SIMS can also provide semi-quantitative data on some inorganic components (right-hand axis). On this wafer, the Al level rises systematically from 7×10^9 atoms/cm² to 1×10^{11} atoms/cm² moving away from the wafer flat, while the B concentration is uniform across the wafer.

Identifying and mapping contamination is important for determining the source of contaminants and eliminating them. TOF-SIMS is uniquely suited to address these needs.



United States Locations

Tempe, Arizona
+1 480 239 0602 info.az@eaglabs.com
+1 602 470 2655 fax

Sunnyvale, California
810 Kifer Road
+1 408 530 3500 info.ca@eaglabs.com
+1 408 530 3501 fax

1135 E Arques Avenue
+1 408 738 3033
+1 408 738 3035 fax

785 Lucerne Drive
+1 408 737 3892
+1 408 737 3916 fax

Peabody, Massachusetts
+1 978 278 9500 info.ma@eaglabs.com
+1 978 278 9501 fax

Chanhassen, Minnesota
+1 952 828 6411 info.mn@eaglabs.com
+1 952 828 6449 fax

East Windsor, New Jersey
+1 609 371 4800 info.nj@eaglabs.com
+1 609 371 5666 fax

Syracuse, New York
+1 315 431 9900 info.ny@eaglabs.com
+1 315 431 9800 fax

Raleigh, North Carolina
+1 919 829 7041 info.nc@eaglabs.com
+1 919 829 5518 fax

Round Rock, Texas
+1 512 671 9500 info.tx@eaglabs.com
+1 512 671 9501 fax

International Locations

Shanghai, China
+ 86 21 6879 6088 info.cn@eaglabs.com
+ 86 21 6879 9086 fax

Tournefeuille, France
+ 33 5 61 73 15 29 info.fr@eaglabs.com
+ 33 5 61 73 15 67 fax

Frankfurt, Germany
+ 49 (0) 693053213 info.de@eaglabs.com
+ 49 (0) 69307941 fax

Tokyo, Japan
+ 81 3 5396 0531 info.jp@eaglabs.com
+ 81 3 5396 1930 fax

HsinChu, Taiwan
+ 886 3 5632303 info.tw@eaglabs.com
+ 886 3 5632306 fax

Uxbridge, United Kingdom
+ 44 (0) 1895 811194 info.uk@eaglabs.com
+ 44 (0) 1895 810350 fax